

# JABRA EVOLVE 30

MORE THAN HEADSETS, A WORKPLACE EVOLUTION

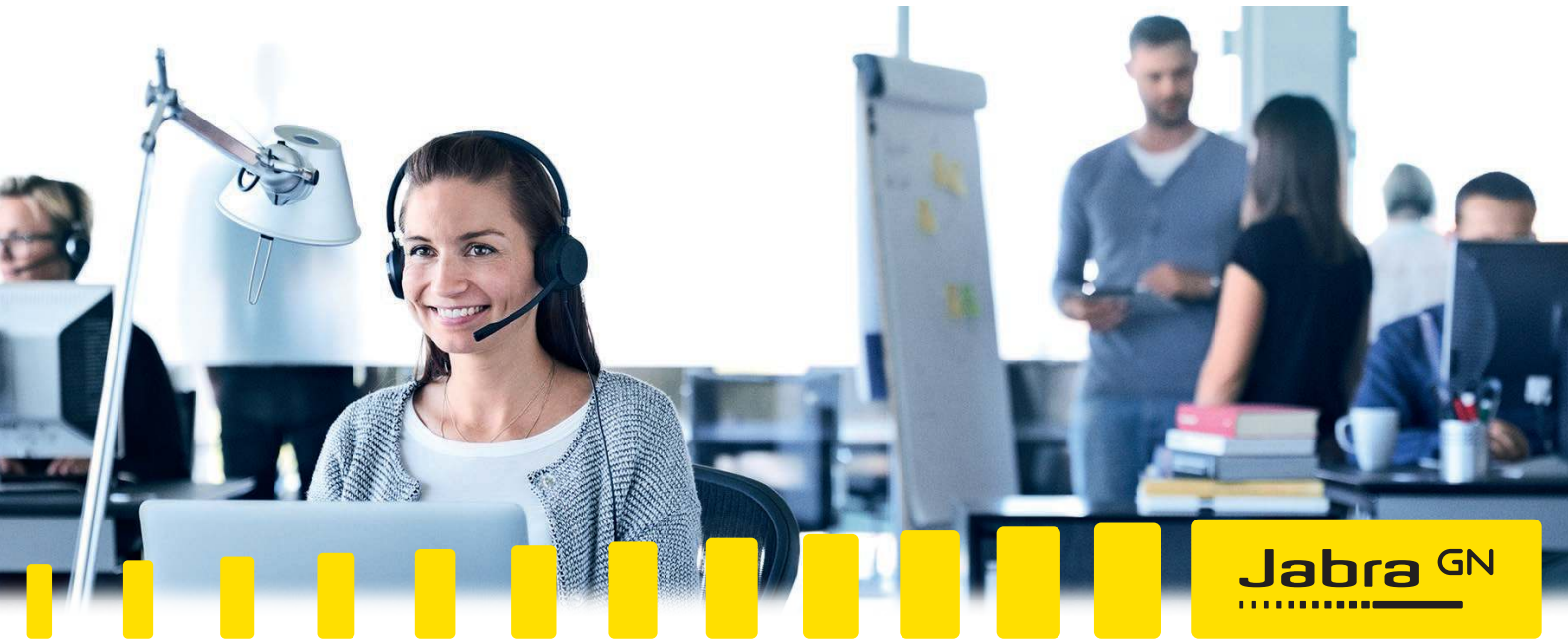
- Made for voice calls and music
- Passive noise cancellation
- USB and 3.5mm connectivity to laptop and smart device



DETAIL	INFORMATION
Packaging dimensions	L 23 x W 18 x H 3.5 cm
Weight mono / duo	Mono headset 171.1 g, Stereo headset 142.5 g
What is in the box	Jabra Evolve 30 headset, pouch, warning leaflet, warranty leaflet, quick start guide, foam inlay (only available for duo), layer card, poly bag
Battery included	N/A
AC power supply	USB power supply by PC
Certifications	Regulatory Approvals: CE, FCC, KCC, RCM, ULIndustrial Certifications: Skype for Business, Lync, Avaya, Cisco
Warranty	2 years
Bluetooth device	No
DECT device	No
NFC	No
Headset bandwidth	Wideband
Connection (mini jack, USB, etc.)	USB, 3.5mm jack*
Speaker size	D28x3.9mm
Speaker sensitivity	93.6dB SPL @ 1kHz
Speaker impedance	32+/-4.8Ω, @ 1.0kHz
Speaker max input power	Rated Input 5mW @ 0.4V, max input 10mW @ 0.56V
Speaker frequency range	150Hz~7kHz, @ Output S.P.L -10dB
Microphone type	Electret condenser (ECM)
Microphone sensitivity	F=1kHz, pin=1Pa, 0dB=1V/Pa, Min=-48dB, Max=-44dB
Microphone frequency range	100Hz ~ 10kHz @ 6dB
Speaker bandwidth music mode	Wideband
Speaker bandwidth speak mode	Wideband
Microphone bandwidth	Wideband
Cord length	Control cable: 95cm, HS cable: 120cm
Operating temperature	-10°C to + 50°C
Storage temperature	-30°C to + 80°C Storage temperature range: (-20°C to +35°C 6 months), (+35°C to +45°C 3 months), (+45°C to +45°C 1 month), (+60°C to +70°C 1 hour with no degradation), (+70°C to +85°C max. 1 hour < 20% degradation)
Power consumption speaker	Rated Input 5mW @ 0.4V, max input 10mW @ 0.56V
Features**	HD voice, PeakStop™ technology, UC Plug-and-play, noise canceling microphone, HiFi sound, easy call management, Jabra software applications, crystal clear sound, around the ear wearing style, passive noise cancellation, connects to multiple devices (smartphone or tablet) with a 3.5mm jack. The control unit is made with secure fit so it will stay on the table and not turn over. The control unit's large buttons and LED indicators provide quick access.

\* The 3.5mm jack is only available on the SKUs listed below.    \*\* Phone dependent

SKU	DESCRIPTION	EAN CODE
5399-823-309	Jabra Evolve 30 II MS Stereo	5706991019964
5399-829-309	Jabra Evolve 30 II UC Stereo	5706991019971
5393-823-309	Jabra Evolve 30 II MS Mono	5706991019940
5393-829-309	Jabra Evolve 30 II UC Mono	5706991019957



# Jabra Evolve 30

## More than a headset, a workplace evolution

Evolve 30 is a professional headset designed to help you focus and improve your conversations.

### Stay connected, using either USB or jack

Connect to your PC via USB or use the 3.5 mm jack for connectivity to your personal device - such as a smartphone or tablet - to work or listen to music wherever you may be.

### Easy call management

In-line call controller with large buttons and LED indicators, making handling of calls and music easy. Pick up or end calls, control volume, or simply mute the line.

### Plug-and-play setup

Works out of the box with all leading Unified Communications platforms. Installation is as easy as simply plugging it in.



Works with softphone, tablet and smartphone

Certified:



### Reasons to choose

#### Jabra Evolve 30

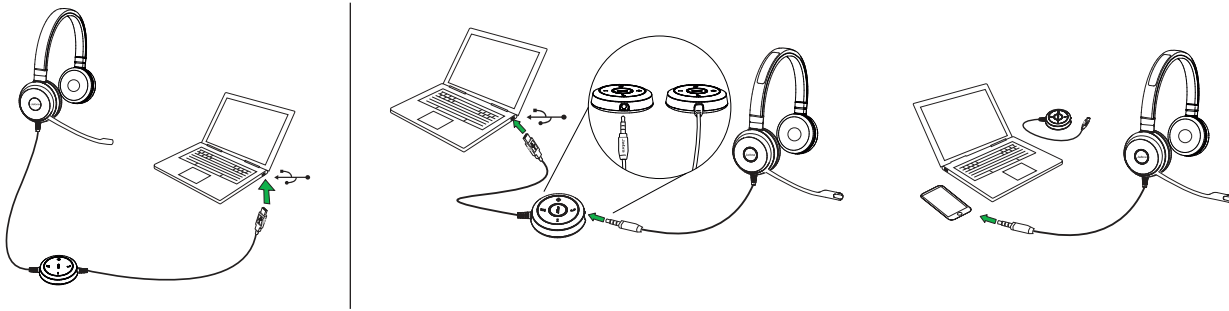
- Works with all smart devices using 3.5mm jack
- Easy call management using control unit
- Made for calls and music



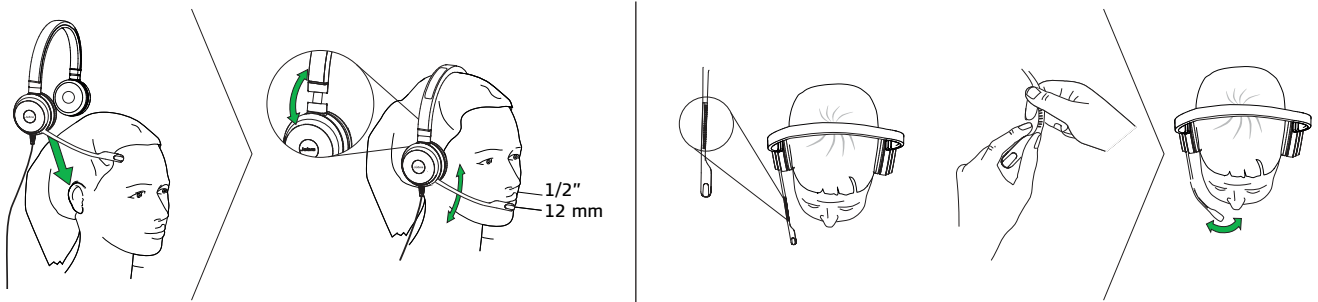
### Connectivity options



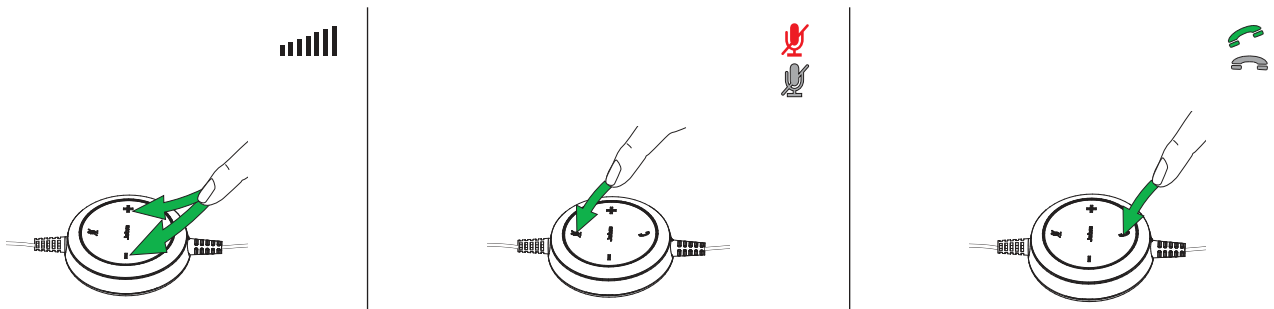
## 01 How to connect





## 02 How to wear



## 03 How to use



Available variants	Variant name	Description	Detail
 Mono  Duo	<b>Jabra Evolve 30 II UC mono</b> Item: 5393-829-309	Corded mono headset for VoIP softphone and smartphone	<ul style="list-style-type: none"> <li>Optimized for Unified Communication with USB adapter that enables easy integration with your PC.</li> <li>3.5 mm jack integrated into the control unit allows you to easily connect your headset to your PC, smartphone and tablet.</li> <li>Leatherette ear cushions.</li> <li>Soft pouch included.</li> </ul>
	<b>Jabra Evolve 30 II UC stereo</b> Item: 5399-829-309	Corded duo headset for VoIP softphone and smartphone	
	<b>Jabra Evolve 30 II MS mono</b> Item: 5393-823-309	Certified for Skype for Business mono headset for VoIP softphone and smartphone	
	<b>Jabra Evolve 30 II MS stereo</b> Item: 5399-823-309	Certified for Skype for Business duo headset for VoIP softphone and smartphone	